



From Data to Story to Theory to Evidence:
Engaging Practitioners in Collaborative CQI

- Stephen Shimshock, PhD
- Yvonne Humenay Roberts, PhD
- Michael Martinez, MSSW

SAFE STRONG SUPPORTIVE

casey family programs

SAFE CHILDREN STRONG FAMILIES SUPPORTIVE COMMUNITIES SAFE CHILDREN STRONG FAMILIES SUPPORTIVE COMMUNITIES SAFE CHILDREN STRONG FAMILIES SUPPORTIVE COMMUNITIES SAFE CHILDREN STRONG FAMILIES SUPPORTIVE COMMUNITIES SAFE CHILDREN STRONG FAMILIES SUPPORTIVE COMMUNITIES SAFE CHILDREN STRONG FAMILIES SUPPORTIVE COMMUNITIES

safe children | strong families | supportive communities

Learning Opportunity

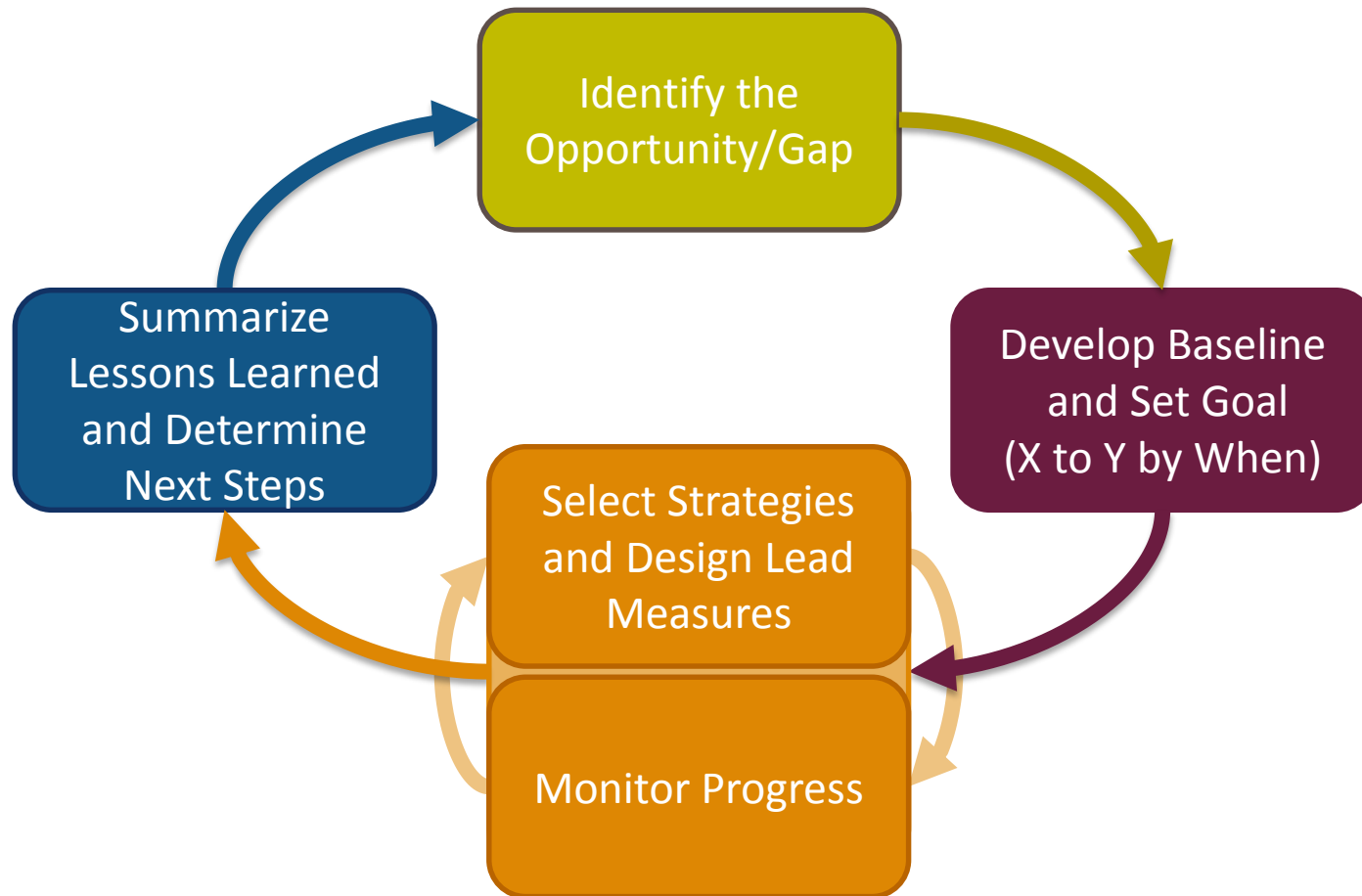
- Every youth and family that walks in our doors is a test of our system.
- Those that exit teach us about the quality and efficiency of our system.
- Those who are yet to come represents an opportunity for us to improve.



Overarching Questions

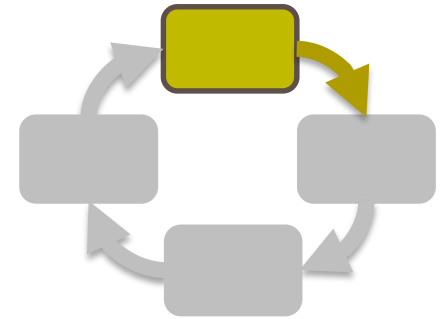
- **Data:** Are there group(s) of youth that have different outcomes than their peers?
- **Stories:** What do we think is behind those differences?
- **Theory:** What can we do differently to change the outcomes?
- **Evidence:** What did we learn? What can we share?

A Framework for CQI

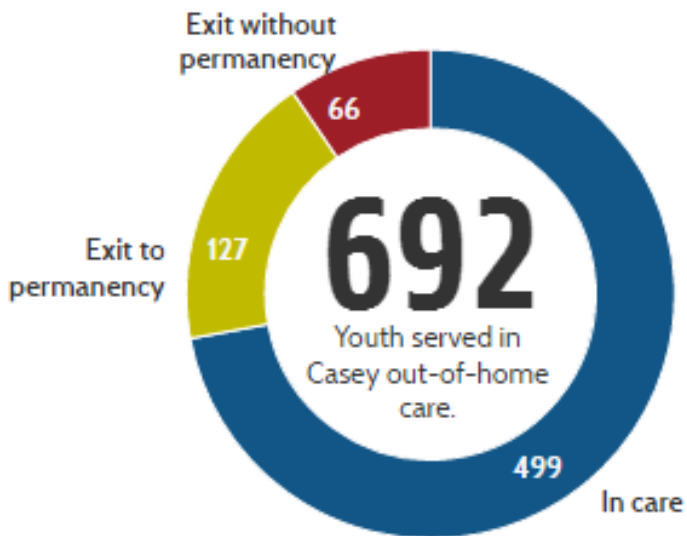


Using Data to Find Opportunities

- What group(s) of youth are having a different experience than others?
- What are the factors contributing to the issue?
- *What evidence can we produce to show the difference?*

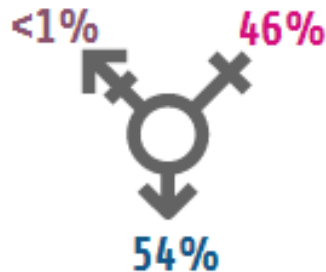


All CFS – Descriptive Data



12.2
Average age (years)

55%
Hispanic/Latino



3.6

Average number of placements prior to Casey

2.1

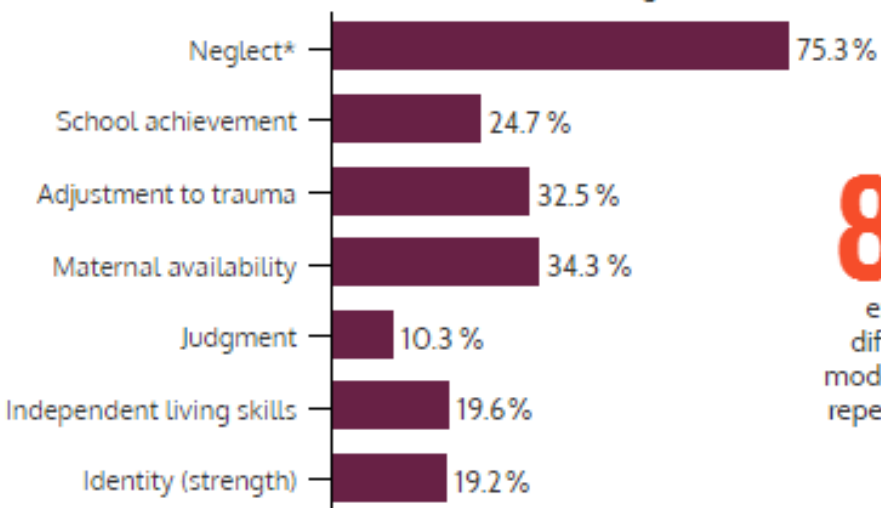
Average number of placements while in Casey care

13.4
Average number of months in Casey care



All CFS – CANS Data

most common actionable need for each CANS domain



83%

experienced 3+
different forms of
moderate to severe or
repeated instances of
trauma

20

Youth in care with NO history of moderate to severe trauma exposure

Average # **4.3** Youth who exited to permanency
types of
trauma by **4.2** Youth currently in care
outcome **4.7** Youth who exited without legal permanency

All CFS - LCA

predictive analyses underscore many considerations



Youth with more placement instability are less likely to exit to permanency



Youth with moderate to severe trauma and complex trauma are less likely to exit to permanency*



Youth with more barriers to permanency are less likely to exit to permanency

Little is captured about child welfare involvement before referral to Casey and after exiting Casey care

factors predicting lower likelihood of obtaining permanency vary by age, including:

0 - 5 years

Unstable placement history

n = 87

6 - 10 years

Actionable depression needs

n = 143

11 - 14 years

More barriers to permanency

n = 221

15 - 18 years

Actionable attention and adjustment to trauma needs

n = 241

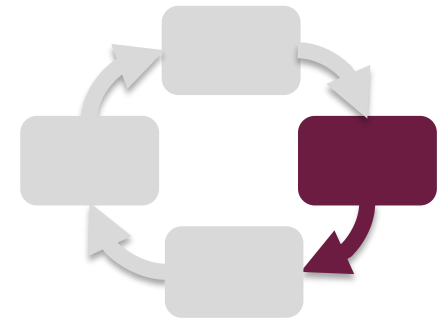
Key Risk Factors

- Age at Entry (15 and older)
- Prior Placements (5 or more)
- Actionable Item (5 or more actionable items in behavioral, risk, and life functioning domains)
- Severe Trauma with Adjustment to Trauma

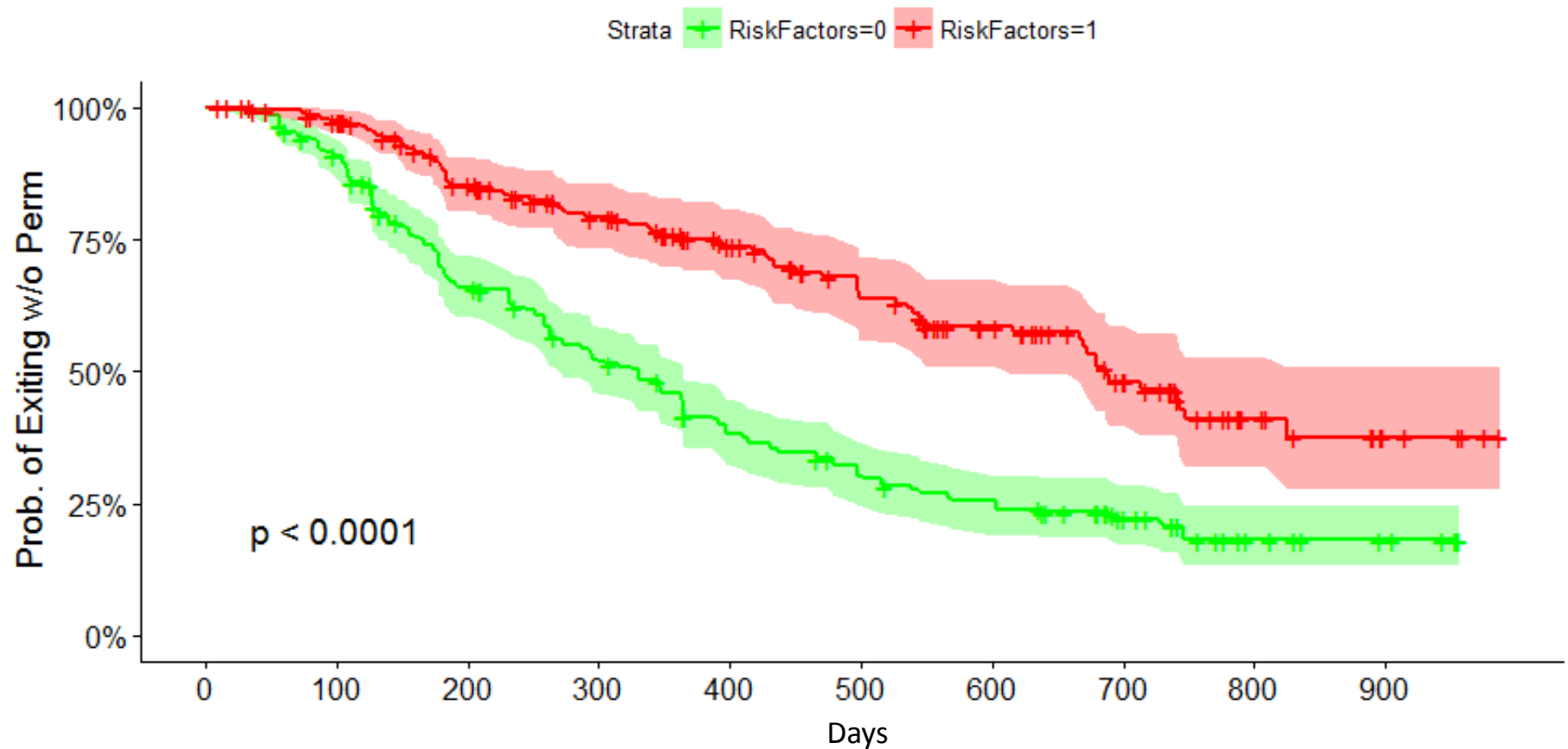


Setting a Baseline and Goal

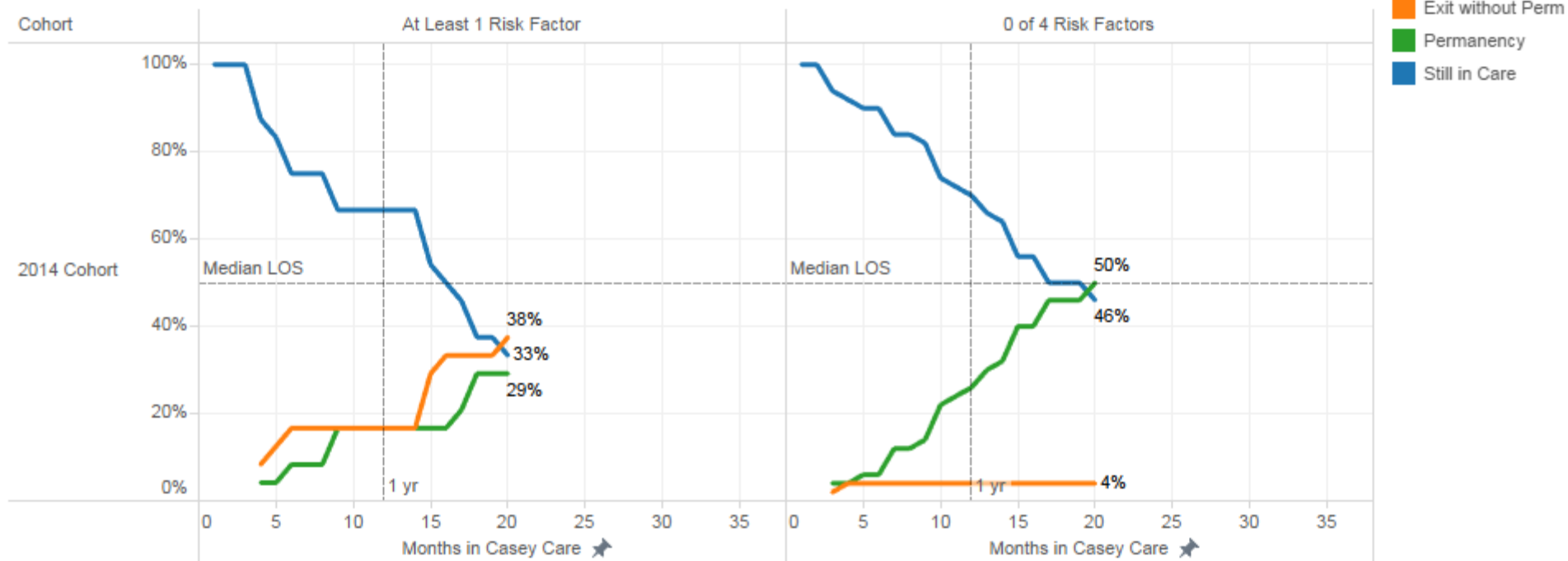
- It is difficult to set a goal (to target some place in the future) without a clear understanding of where you are today.
- A clear baseline is the “X” in the goal statement “X to Y by When.”
- Stating a goal in this way provides for clear measurement as to whether or not the theory of change is making a difference.



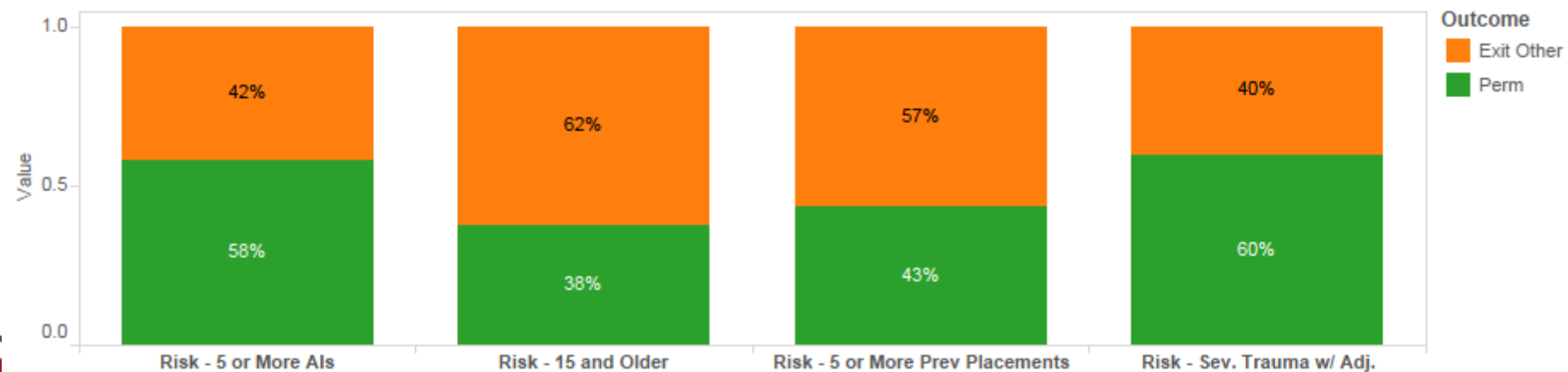
Time to Event Analysis



Time to Exit Comparison by Entry Cohort Year and Risk Factors



2013-2014 Entry Cohorts Combined (Exits Only - Does Not Include Still in Care)



2014 – 2015 Exits by Group



Shared Vision Issue



- 20 of 32 Exits Achieved Permanency
- Avg Age at Enrollment: 12
- Median LOS (mo.) with Casey: 7.5
- Avg # of Plcmts Prior to Casey: 6



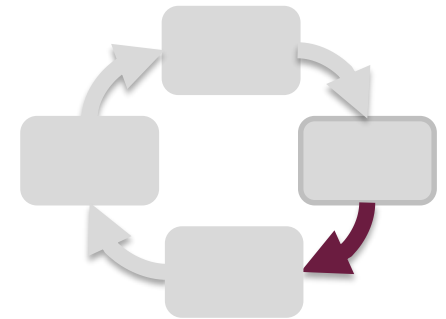
Remaining Youth



- 23 of 28 Exits Achieved Permanency
- Avg Age at Enrollment: 10
- Median LOS (mo.) with Casey: 6.4
- Avg # of Plcmts Prior to Casey: 4

Facilitated Collaborative Inquiry

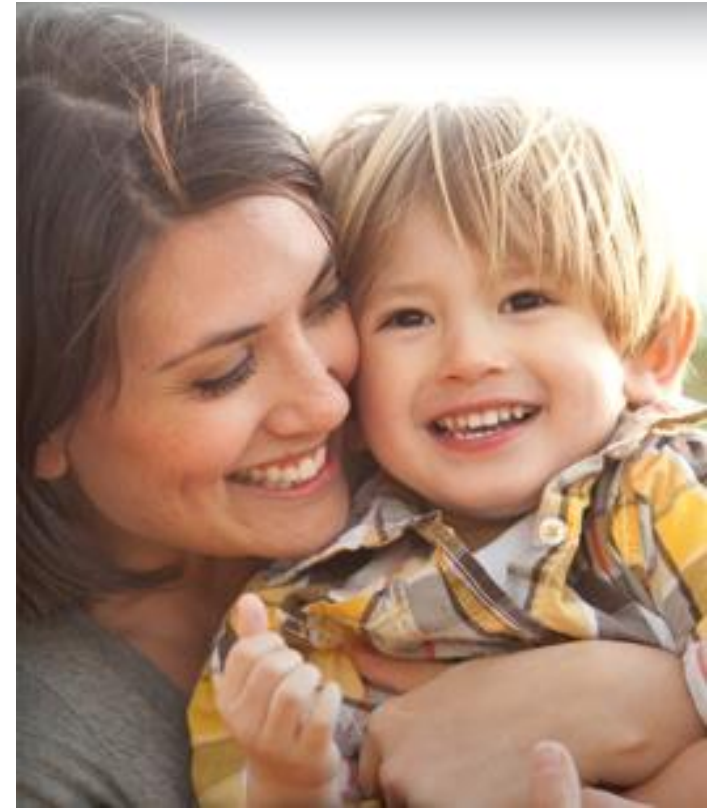
- **Facilitated:** *FCI aims to shift the traditional role of “researcher” to one of “facilitator.” The role of “researcher” is distributed to the group.*
- **Collaborative:** *FCI is a collaborative process that draws on the expertise and insights from all involved.*
- **Inquiry:** *FCI is an inquiry process that aims to empower participants in making sense of their data and taking informed action.*



Story Session

A story session has several key components:

1. A topic of interest
2. Story eliciting questions
3. Story forms (includes questions about the stories told)
4. Clustering
5. Report out



Sample Questions about the Story

Questions about the Story

1. What is the “tone” of this story?

Negative |-----| Positive

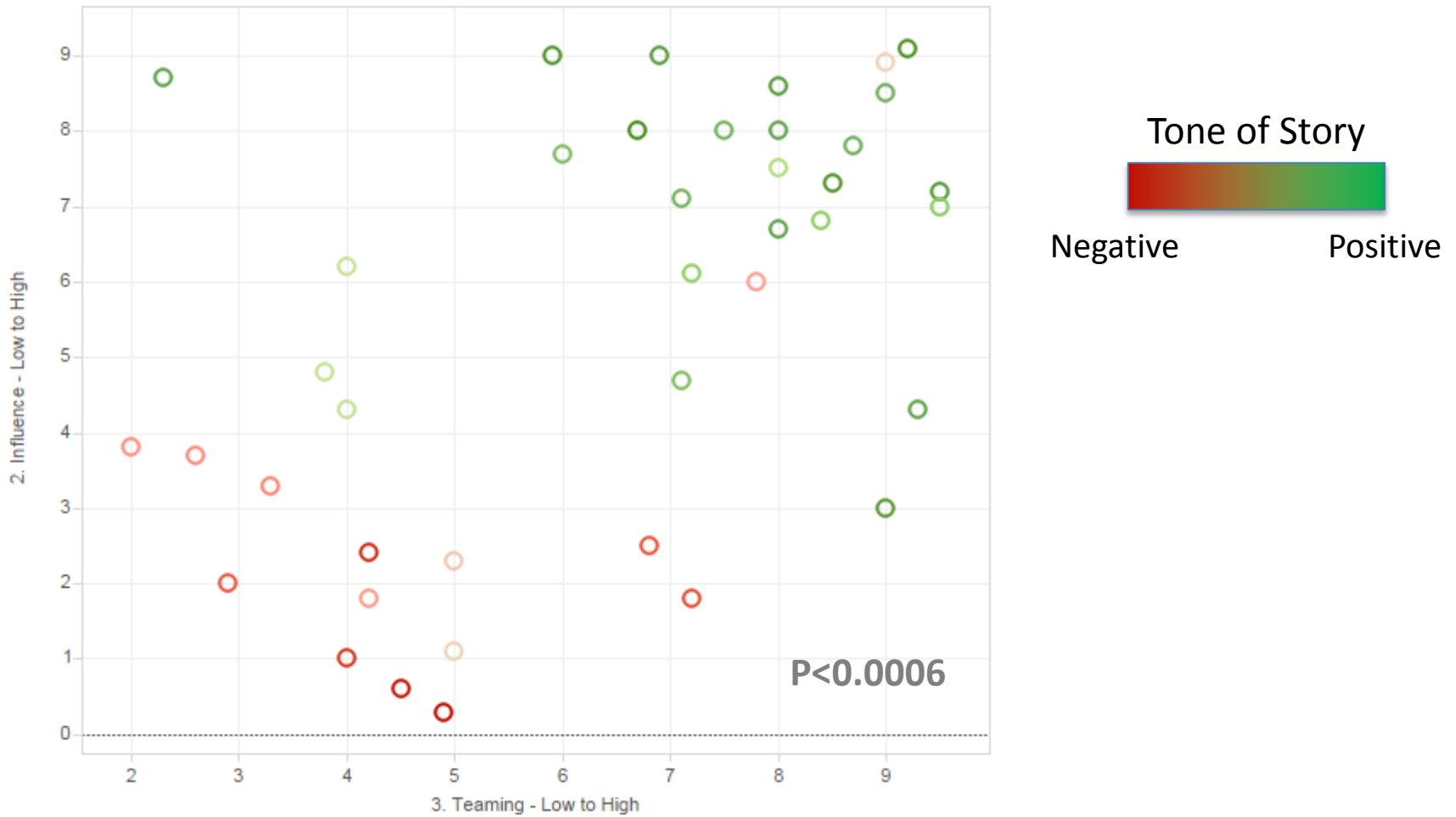
2. What was your perceived level of influence in the story you told?

No influence |-----| Total Influence

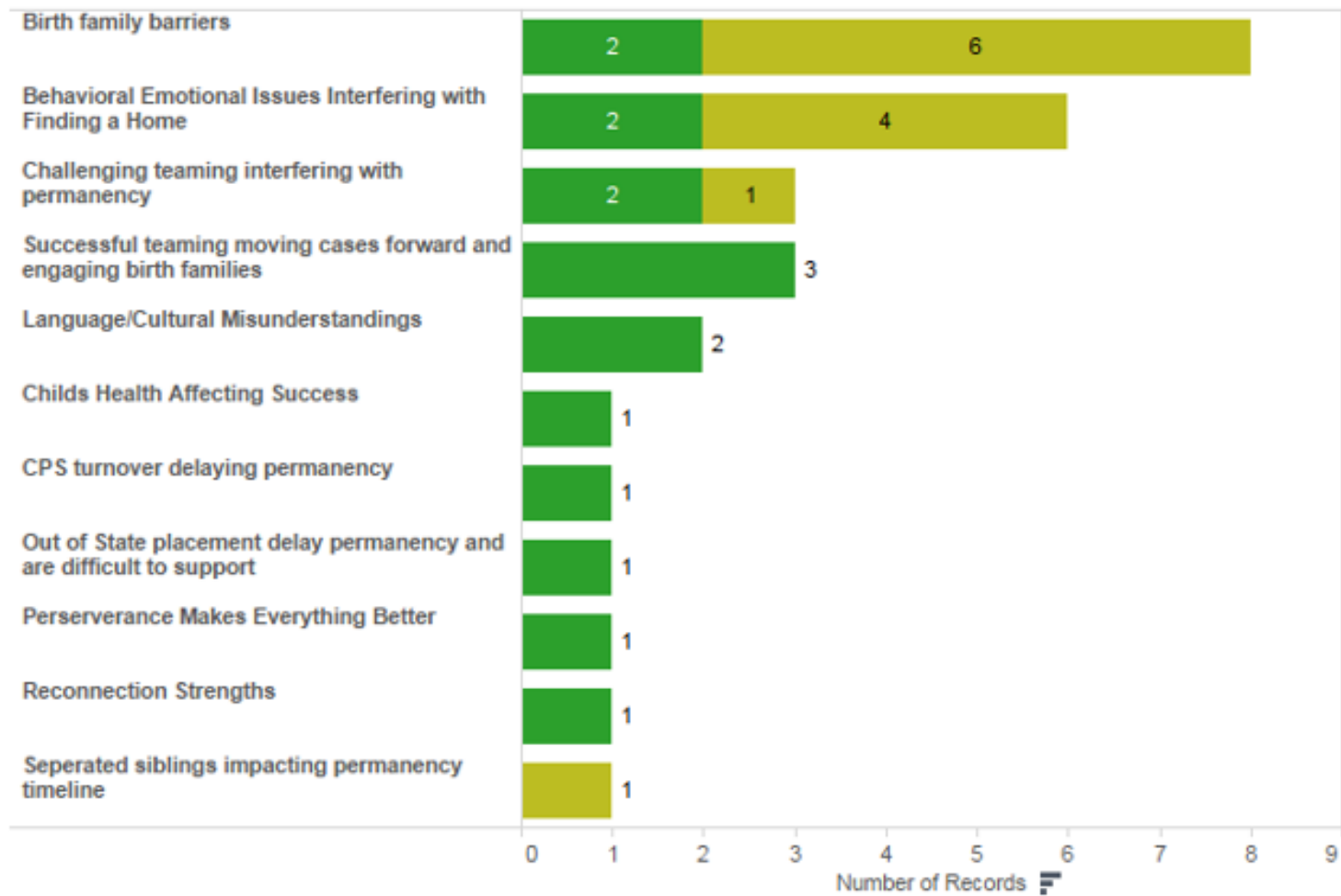
3. What was the level of teaming in the story you told?

No Teaming |-----| Everyone on the same page

Story Data

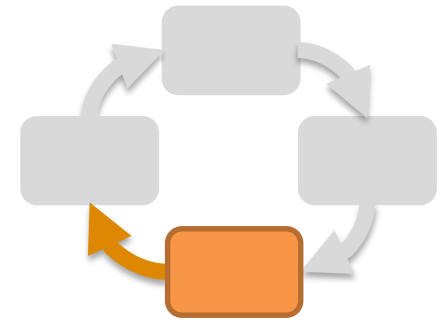


Initial Clusters



Select Strategies and Measures

- **MDT Within the First 60 Days:** *For all new cases, social workers committed to an MDT within 60 days of enrollment.*
- **Shared Vision Scale:** *Assess level of teaming to determine frequency and type of MDT.*
- **Increase Transparency:** *Surface various barriers and biases.*

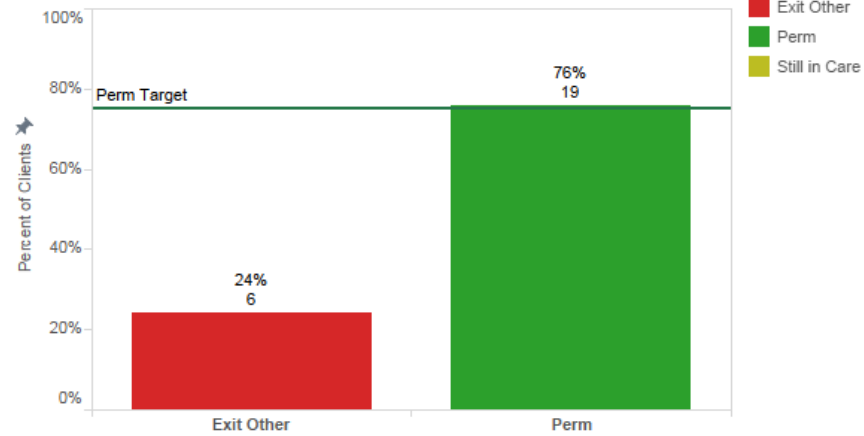


Safe Permanence Group (Current Status)

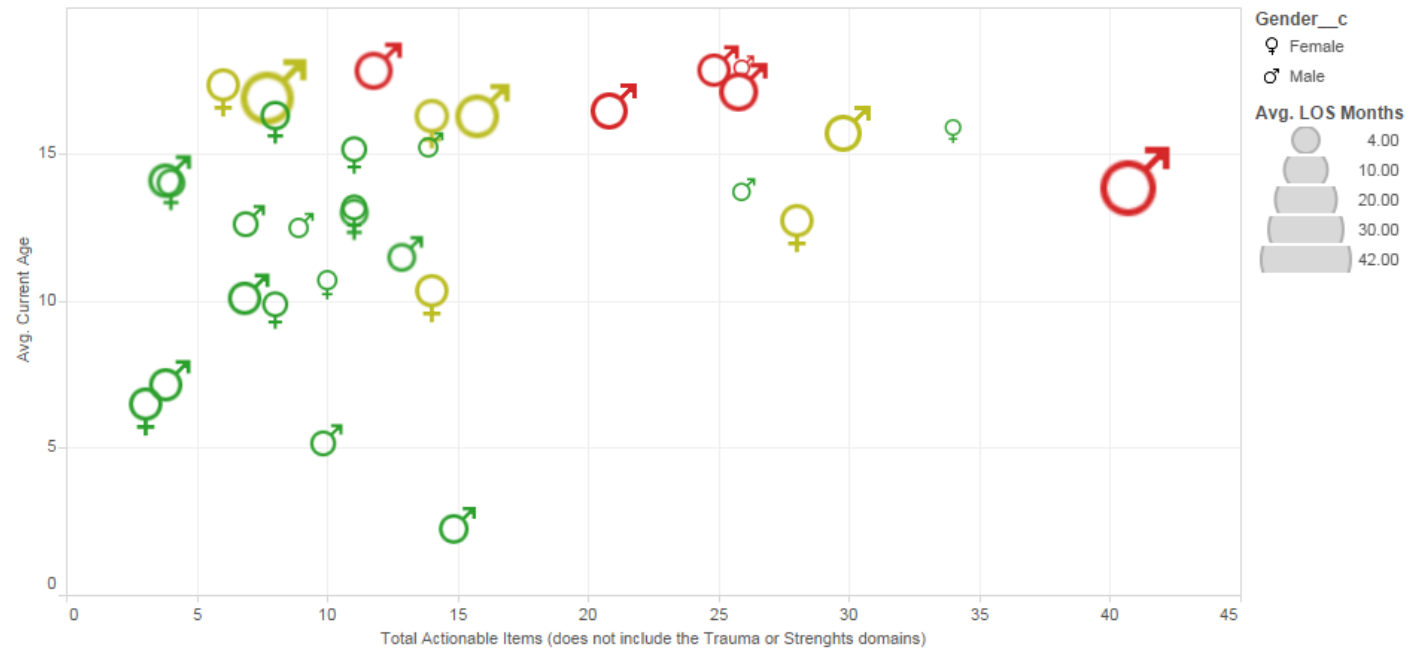
	# of Clients	Median LOS
Perm	19	8.8
Exit Other	6	19.7
Still in Care	7	16.2

Includes youth that were identified (in July 2015) as being affected by the "Safe Permanence" issue. Note: the Permanency count includes post-closure permanencies.

Safe Permanence Goal Status

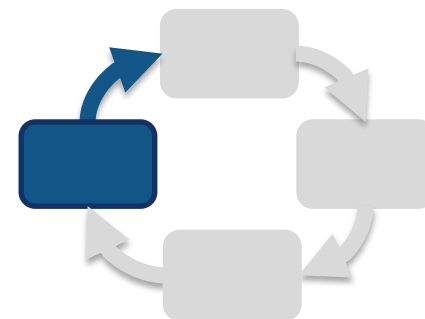


Safe Permanence CANS Chart



Lessons Learned

We will have a consistent format for offices to summarize their findings. In this way, offices can explore a variety of topics while having a common way to share their lessons learned.



- We observed that...
- We thought it was because...
- So we tried...
- Which resulted in...

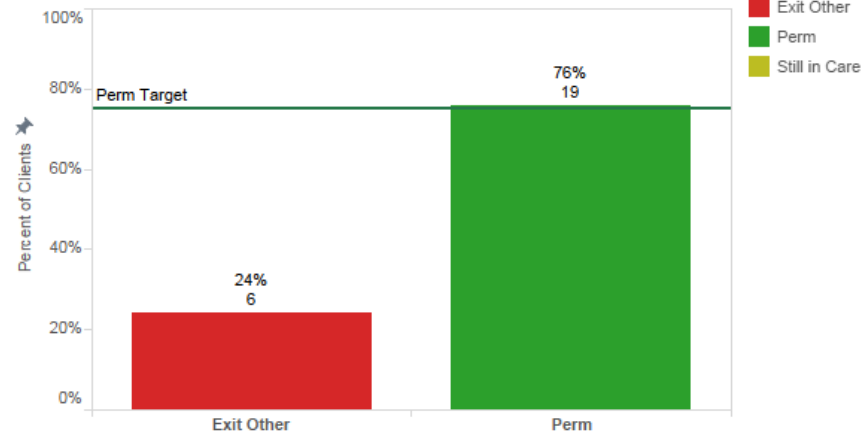
*[Format Adapted from Chapin Hall](#)

Safe Permanence Group (Current Status)

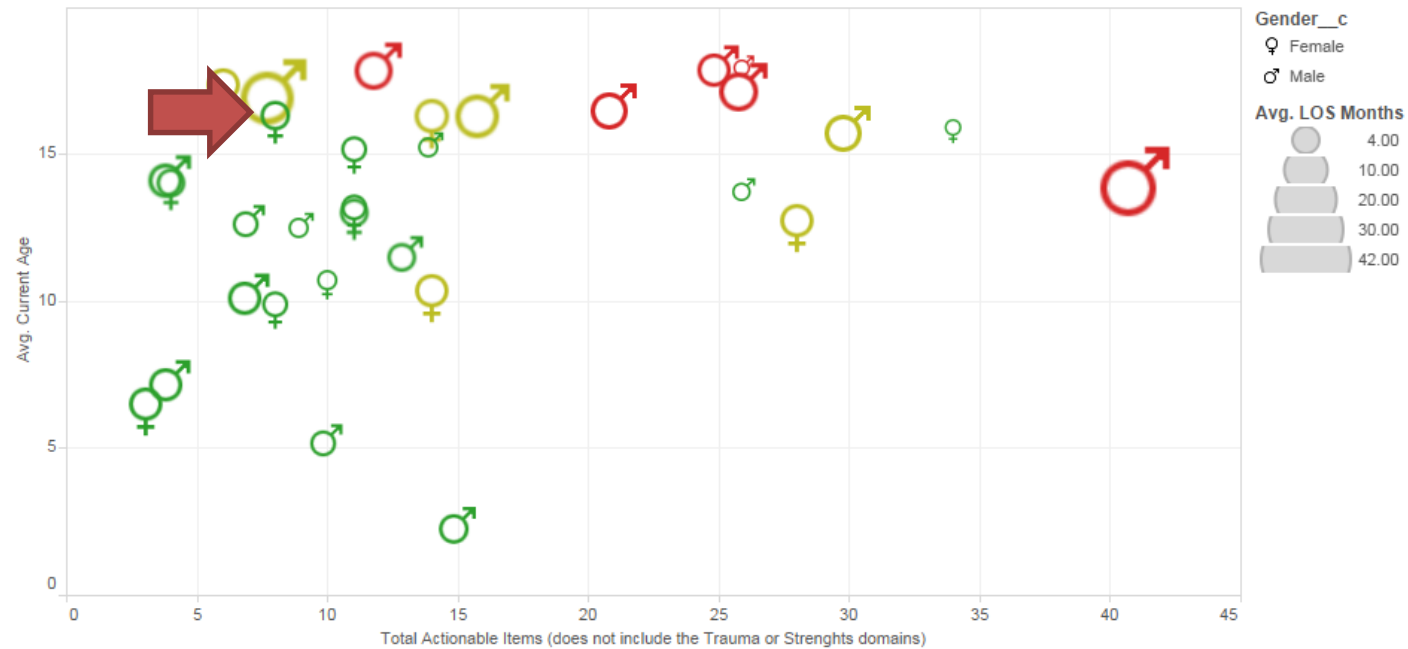
	# of Clients	Median LOS
Perm	19	8.8
Exit Other	6	19.7
Still in Care	7	16.2

Includes youth that were identified (in July 2015) as being affected by the "Safe Permanence" issue. Note: the Permanency count includes post-closure permanencies.

Safe Permanence Goal Status



Safe Permanence CANS Chart



The Hoffman Story

- [Portrait of Addict](#)

Questions

- Stephen Shimshock, PhD
 - sshimshock@casey.org
- Yvonne Humenay Roberts, PhD
 - yroberts@casey.org
- Michael Martinez, MSSW
 - mmartinez@casey.org